



Academic Year 2025-2026
Exchange Guide
**Leiden University of
Applied Sciences**

Authors: Thomas Lodder & Lieke Steijger

International Office, O&O, OO&S,
Leiden University of Applied Sciences

Date: 18-03-2025

V1.0

Contents

Disclaimer	4
1. About Us	5
With an eye on tomorrow	5
Heard and seen	5
Inspired, engaged and meaningful.....	5
2. The Netherlands, how things work here	6
Emergency numbers	6
Medical care.....	6
Health insurance	6
Public transport	7
Identification and residence permits	7
Working while studying	8
ISIC – International Student Identity Card	8
ESN – Erasmus Student Network.....	8
3. Leiden, Key to Discoveries.....	9
Registration at the municipality & Citizen Service Number (BSN)	9
Tourist Information Centre	9
Market	9
Museums	9
Dutch Bank account.....	10
Accommodation	10
Cafes and bars.....	11
Bicycles.....	11
Pharmacies	11
Sports & Fitness.....	12
4. LUAS in-depth	13
LUAS exchange website	13
Opening hours Leiden UAS	13
Servicedesk	13
Restaurants and cafés	13
Media Centre (more than a library)	14
International Office.....	14
Bookshop Leiden UAS.....	14
Need extra help?.....	14

Grading system	14
Academic Calendar & Holidays	15
5. Courses offered.....	16
International Business 1 & 2	16
The International Professional in the Public Sector	18
Applied Molecular Biology.....	19
Genomics	19
Metabolomics.....	20
Food Health Innovation.....	21

Disclaimer

The information in this guide is, to the best of our knowledge, true and accurate at the time of publication and is solely for information purposes. Changing circumstances may cause alterations in its outline at any time. Leiden University of Applied Sciences accepts no liability for any loss or damage howsoever arising because of use or reliance on this guide or on the information thereon or in respect of information accessed via any links from the accompanying web pages.

1. About Us

The Dutch education system features two types of institution of higher education: research universities (WO) and universities of applied sciences (HBO). Leiden UAS (LUAS) is a university of applied sciences.



We offer Bachelor's and Master's programmes, exchanges programmes, and (post-graduate) courses and we perform applied research in a variety of domains ranging from healthcare and social work to economics, and from technology to education. Our education is focused on competencies, offers freedom of choice and challenges students to realise their potential. We encourage and support students in developing their knowledge and skills so that they are well prepared for their future careers.

With an eye on tomorrow

We are a modern educational institution and learning community, more than just a transmitter of knowledge, but also a place that shapes our students. This is where lifelong development is the starting point. In this way, we aim to equip our students with all the tools they need to make a valuable contribution to society.

Heard and seen

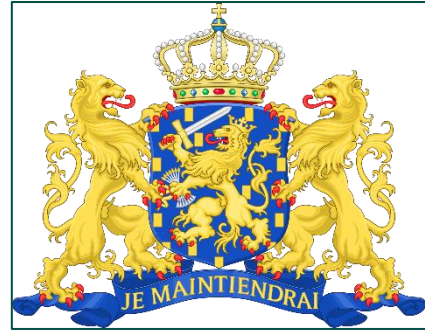
At Leiden University of Applied Sciences, we see who you are, what you can do, and what you need. We also recognise what our society requires. Bearing this in mind, students, teachers, researchers, and professionals come together to shape the future.

Inspired, engaged and meaningful

During your exchange at Leiden UAS you will experience a small scale programme at our vibrant university. You will be participating in classes that are focused on problem based learning. Our values: Inspired, engaged and meaningful are at the core of our courses. You will work together as a team with your fellow students. Interaction in class is highly appreciated and you are free to ask and use your own creativity to apply your newly-gained knowledge.

2. The Netherlands, how things work here

The Netherlands, informally Holland, is a country located in Northwestern Europe with overseas territories in the Caribbean. It is the largest of the four constituent countries of the Kingdom of the Netherlands. The Netherlands consists of twelve provinces; it borders Germany to the east and Belgium to the south, with a North Sea coastline to the north and west. It shares maritime borders with the United Kingdom, Germany, and Belgium. The official language is Dutch, with Frisian as a secondary official language in the province of Friesland. Dutch, English, and Papiamentu are official in the Caribbean territories. Netherlands literally means "lower countries" in reference to its low elevation and flat topography, with 26% situated below sea level.



Emergency numbers

If you need to contact an ambulance, the fire brigade or the police, call **112**. This is the emergency number for all EU countries. This number is reachable from fixed and mobile phones and is free of charge. If you need to talk to the police without a sense of emergency, you can call **0900-8844** (2 cents per minute).

Leiden University of Applied Sciences has a crisis telephone number. If you encounter emergency situations while being in the Netherlands you can call our crisis telephone number. The telephone number is **(+31) (0)71-51 88889** and can be called 24 hours a day, 7 days a week.

Next to this, we ask you to fill out your ICE (in case of emergency) details. You will receive more information on this during your first days at our university.

Medical care

In case of illness, you should contact a general practitioner/family doctor (*huisarts*) first. They are your first point of contact to any specialist or hospital. Most GP's speak English, but it is important to check if they participate in your health care system. The Leiden International Centre can assist you in finding a general practitioner. We recommend you find a GP as soon as you have arrived. The website contains a wealth of useful information on health, and their staff speak various foreign languages: [General Practitioners and Local Emergency Units | Leiden International Centre](#)

Medical emergencies

For life threatening situations call: **112** (ambulance, fire department or police department) or visit the emergency room at the nearest hospital. If you are not feeling well and your symptoms are not life-threatening, you can/must contact your general practitioner first..

Payment

Make sure to bring proof of your health insurance to the appointment, otherwise you will have to pay for the consultation directly after you have visited the doctor. A regular consultation costs around €30 - €70. Blood tests, psychological support, etc. cost more. Do not forget to ask for a receipt, as after your visit you can declare these costs to your insurance company.

Health insurance

When preparing for your stay in Leiden, it is very important to ensure that you will have sufficient healthcare insurance during your stay. Leiden UAS highly recommends that you contact your own health insurance company before travelling to the Netherlands, and find out exactly what you need to do to be properly insured against medical expenses in the Netherlands.

It is also advisable to take out third-party liability insurance. In the Netherlands you are responsible for paying the costs of damages resulting from any accident you cause. As these costs can be extremely high,

we strongly urge foreign students coming to the Netherlands to take out third-party liability insurance (*wettelijke aansprakelijkheidsverzekering*), which will cover all expenses in many cases. Here, too, is the advice to contact your own insurance company to see their options.

InsureToStudy

InsureToStudy offers the students of the Leiden UAS (and their family members) a special insurance, the Masterplan+. This student insurance is known for its excellent price-quality ratio. This insurance meets both the IND (the Dutch immigration office) requirements if you need a residence permit and the Leiden UAS requirements of having sufficient medical and liability insurance. Have a look at the extent of cover:

[Downloads | Insure To Study.](#)

In short, the Masterplan+ is €56,10 per month (€1,87 per day) for a full package insurance including pre-existing conditions medical costs.

Apply for Masterplan+ here: [Within five minutes you are insured for a bright future - www.insuretostudy.com](http://www.insuretostudy.com)

You can always contact InsureToStudy for personal advice at phone number 0031 70 2051860 or send an email to info@insuretostudy.com.

Public transport

Public transport in the Netherlands is reliable, convenient and of a high standard. The main public transport in the Netherlands for longer distances is by train. Long-distance buses are limited to a few missing railway connections. Regional and local public transport is by bus, and in some cities by metro and tram. Also there are ferries. This is a very good public transport journey planner:

[9292.nl/en - Travel planner & e-tickets train, bus, metro, tram & boat](http://9292.nl/en)

The *Nederlandse Spoorwegen* (NS) is the national train company. NS offers special discount cards for off-peak travel. These discount cards, which you have to buy, have an *OV-chipkaart* built in. To find out the best deal for you, visit an NS counter. Tickets are checked regularly and fines are high. If you travel by train you can use your *OV-Chipkaart* or you can buy a paper train ticket from an NS ticket machine. Alternatively you can check in and out with your debit card, for more info have a look at

[Check in with your debit card, credit card or smartphone | NS](#)

Leiden has 2 train stations: *Leiden Lammenschans* and *Leiden Centraal*. From *Leiden Centraal* (which is the central train station) it is a 5-10 minute walk to our university. On the English section of the NS-website you can find a journey planner for travelling by train. This journey planner also shows ticket prices: [Home | NS](#)

Identification and residence permits

Please make sure you have a valid passport or identity card before you travel to the Netherlands. Make sure this is valid 3 months after your exchange period is over.

Students from EU/EEA countries

Students from EU/EEA countries are not required to apply for a residence permit, nor are they required to register with the Dutch Immigration Office (IND).

Students from non-EU/EEA countries

Students from non-EU/EEA countries who intend to stay in the Netherlands for more than 90 days usually need a provisional residence permit for the purpose of study, or MVV. You can check here to find out if you need an MVV [Provisional residence permit \(MVV\) | IND](#). If you need an MVV, Leiden UAS will help you to arrange it, as you cannot arrange this yourself. You will need to prove that you have been admitted to the Leiden UAS exchange programme and that you have sufficient financial means to live in the Netherlands.

For our incoming exchange students, this means we will let our Student Registration Office know which of you will need a MVV and they will contact you directly with further information and instructions. For the application of your immigration (entry visa and/or residence permit), the legal fee is €243,- in calendar year 2025 and is reindexed every calendar year. Please note this only applicable for students with a non-EU/EEA nationality and these fees are non-refundable.

You can find more information about this in the brochure 'Coming to Study in The Netherlands', available on the website of the Dutch Immigration Office (IND): [Coming to study in the Netherlands \(ind.nl\)](https://ind.nl).

Working while studying

If you want to work during your studies in the Netherlands you are allowed to do so. Depending on your nationality (namely from non-EEA/EU countries), you can only do so for 16 hours per week and if the employer has applied for a work permit for you. If you want to do an internship it is also seen as work, thus certain rules apply, including switching to a Dutch basic health insurance which is quite expensive.

You can read more about this topic here: [Working while studying | Study in NL](#)

ISIC – International Student Identity Card

ISIC stands for International Student Identity Card (ISIC). With this card you can get discounts and services at home and around the world. Every year more than 4.5 million students from over 130 countries use this card. Check: [ISIC - International Student Identity Card](#)

ESN – Erasmus Student Network

The main focus of ESN is placed on current exchange students, who often face problems (and feel abandoned) in their new environments. Therefore, ESN offers help in the academic, social and practical integration process. This is mainly done through activities in the local sections, which include cultural and social events such as trips to various places within the country, film nights, language projects, international food festivals and last, but not least, parties. In addition to that, many sections have introduced mentor systems, which help the international students mainly in academic and practical integration.

[Erasmus Student Network \(esn.org\)](https://esn.org)

3. Leiden, Key to Discoveries

With around 120.000 inhabitants, Leiden is a medium-sized city by Dutch standards. It is a friendly city which has a large population of students. Leiden is close to Amsterdam, Rotterdam, The Hague and Utrecht, the four biggest cities in the Netherlands. Schiphol airport, the world famous *Keukenhof* with its millions of blooming flower bulbs each spring and the beach are within easy reach.



Leiden is an old city with a rich history and a beautiful historic centre, offering a wide range of cultural and leisure facilities. The city of Leiden hosts very interesting and inspiring museums. As a traditional university town, home to both Leiden University and Leiden UAS, it is well known for its vivid student life.

Registration at the municipality & Citizen Service Number (BSN)

If you are staying in the Netherlands for more than four months you will need to have yourself registered as new inhabitant of the town where you are living. For this registration you have to go to the local town hall. If you stay in Leiden, you have to call the local town hall (14071) or online via [Contact and opening hours - Gemeente Leiden](#) to make a registration appointment.

After you have done your registration at the local town hall you automatically receive a social security number. In Dutch, this is called *BurgerServiceNummer* (BSN). You need to have this number if you work alongside your studies, open a Dutch bank account, do an internship here, have a local SIM card, etc.

The address of the Leiden town hall is Bargelaan 190, 2333 CW Leiden, which is next to *Leiden centraal* and close to LUAS.

Tourist Information Centre

Your visit to Leiden starts at the Tourist Information Centre. This centre can provide you with ideas for trips, a city plan, advice on accommodation, transport, restaurants and much more. The Tourist Information Centre is very easy to reach, located close to the central train station. You can be sure of a warm welcome there:

Stationsweg 26
2312 AV Leiden
Tel: 071-516 60 00
E-mail: info@vvlleiden.nl
[Leiden, Key to Discoveries | Visit Leiden](#)

Market

Vegetables, fish, fruit, flowers, clothes and delicacies from all corners of the world... Almost everything you can imagine can all be found at Leiden's street market. On Wednesdays and Saturdays from 08.00 until 17.00 the stalls of this bustling market line the *Botermarkt*, the *Vismarkt*, the *Aalmarkt* and the *Nieuwe Rijn*, adding an extra touch of local and foreign colour to shopping in Leiden.

Museums

Leiden has 13 fantastic museums all in walking distance of one another. Dinosaur skeletons, masterpieces by Rembrandt and Lievens: you will find all of this and more in Leiden's museums. Check here for in-depth information about these 13 museums. [Museums in Leiden | Visit Leiden](#)

The Netherlands Museum Pass (in Dutch *Museumkaart*) is a card that allows free entrance to a number of museums around the Netherlands. The card costs €75, and is valid for one year. You can buy it any of the participating museums before entering the museum or online: [The Netherlands Museum Pass | Museum](#). It is by far the best value way to get into many of the museums in the Netherlands.

Dutch Bank account

In our university building you can pay with bank cards which have the Maestro logo. If you do not have a bank card with the Maestro logo, you can open a Dutch bank account. Here are a few names and addresses of banks in Leiden:

Rabobank, Schipholweg 9, Leiden
ING, Schuttersveld 18, Leiden
ABN AMRO, Bargelaan 2, 2333 CT Leiden

Accommodation

First, we must start with a warning:

We advise you to start as soon as possible when looking for housing. Because there is a shortage of affordable accommodation in the Leiden area, finding a room can be very difficult and time-consuming!

DUWO University Housing

DUWO Housing Leiden UAS facilitates a limited number of rooms of DUWO Housing, one of the largest student housing providers in The Netherlands. During your application, you will be asked if you are interested in making use of this offer, and further instructions will be sent once you have indicated your interest.

Hospi Housing

Living with a host or host family is a unique and cozy way of living. You have your own room but share facilities such as the kitchen or bathroom. It's an ideal solution if you're just starting out on your own or if you're temporarily looking for accommodation. Hospi Housing has a large network of verified hosts and host families and ensures the perfect match. With the 'No room, No pay' model, you can sign up for free and get in touch with hosts immediately.

[Rent a room | Hospi Housing platform for homestay & homesharing](#)

HousingAnywhere.com

Leiden UAS is a partner of HousingAnywhere.com, the international student-to-student housing platform. Students who are coming from abroad to Leiden can find & book a student room on Housing Anywhere. The rooms on this platform are offered by our students that go abroad for an exchange period or internship. Using the platform itself is completely free for you as a student. When you make a concrete booking, an administrative fee will be charged as a part of Housing Anywhere's secure booking system.

[Sign up - University of Applied Sciences Leiden | HousingAnywhere](#)

Finding housing through Facebook

If you are looking for housing in Leiden or The Hague (12 minutes by train to Leiden), do check out at least these Facebook groups:

[Leiden Housing | Facebook](#)

[Den Haag Housing | Facebook](#)

ROOM.nl

ROOM offers student housing in Amsterdam, Delft, The Hague, Deventer, Leiden, Haarlem, Wageningen and Groningen. ROOM is a cooperation of the non-profit student housing corporations Lefier, Idealis, Ymere and DUWO. See also the DUWO page with more information on the difference between DUWO University Housing and Direct Offer/ROOM.nl:

[International students - Stichting DUWO](#)

RoomPlaza

RoomPlaza is another platform you can use. What makes this unique, is that you can sign up as a group for a shared space.

[RoomPlaza](#)

Rental contract

In the Netherlands it is common to sign a rental contract if you rent a room or apartment. You will always sign a contract for a specific period of time (for example six months, a year, etc.). Leiden UAS advises you not to rent a room or apartment without signing a contract. You should always read the conditions in the rental contract carefully and never sign a rental contract without making sure you understand what it says.

Last but not least, be cautious!

Where there is high demand and low supply, there are opportunists. Therefore, we highly recommend you to be very careful when a really good deal is offered to you or you feel like something is off. If it sounds too good to be true, it probably is.

Cafes and bars

Life in Leiden is greatly influenced by the relatively large number of students, as most of them both live and study in the historic city of Leiden. You will almost always run into someone you know when you go out at night. This also means there are several bars and cafes, over 70.

One in particular is Einstein. Each Wednesday night they organize a night for international students. It starts at 22.00 and entrance is for free. [Café Einstein](#) is located in the city centre (address: Nieuwe Rijn 19, Leiden).

A bit closer by is our Grand Café, located within the the university building of Leiden UAS. Here you can relax with your friends and have a coffee or a drink.

Bicycles

Cycling in the Netherlands is a common and popular method of both transport and recreation. The country is well equipped with cycle-paths and other segregated cycle facilities. The network reaches all parts of the nation and into the bordering nations of Belgium and Germany. The cycling surface quality is good and the routing tends to be direct with gentle turns making it possible to cycle at speed for considerable distances. Cycleways come with their own sets of rules and systems - including traffic signals/lights, tunnels and lanes.

In Leiden most students have a bike to transport themselves. It is cheap, easy and quick. Therefore we do advise all international students to buy a second hand bike when they are in Leiden.

A good address in Leiden to buy a second hand bike is [BUDGET BIKE LEIDEN - Meer dan een Fietsenwinkel](#).at Hogewoerd 71, but most bicycle stores will offer second hand bikes. You can also try your luck on www.marktplaats.nl (a Dutch eBay/online marketplace) or try to find a bike via [Facebook](#).

Pharmacies

Drugstores (*drogisterij*) sell over the counter, non-prescription medicine, such as aspirin, cough medicine, and toiletries. If necessary, your *huisarts* (General Practitioner) will give you a prescription. Prescriptions should be taken to the nearest pharmacy (*apotheek*), your GP or assistant can direct you to the nearest one. There is always a pharmacy open, even in the weekends. Here are a few names and addresses of pharmacies in Leiden:

Centraal Apotheek, Breestraat 74, 071-5120552

Haven Apotheek, Oosterkerkstraat 1, 071-5226085

De Aloe, Roodenburgerstraat 1A, 071-5120502

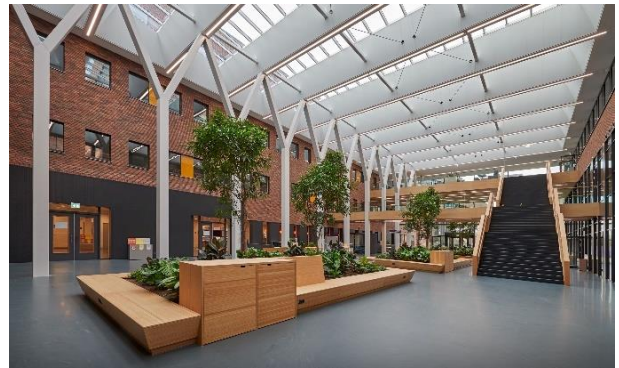
Sports & Fitness

The University Sports Centre of Leiden University welcomes you. With your membership, a choice of 65 different sports is being offered. Have a look at <http://www.uscleiden.com/> for information about membership, rates, locations etc.

Basic-Fit is a large chain focused on the budget segment. To use their own words: Building on our longstanding expertise, we combine a flexible low-cost membership model with high-quality fitness equipment and technology, virtual and live group lessons, and free usage of the Basic-Fit App. You can see their prices here: [Prices & Memberships | Basic-Fit](#).

4. LUAS in-depth

Leiden UAS is a medium sized campus with 12.000+ students divided over 26 bachelor and master degrees all under one roof. There is a unique mix of different characters and cultures at Leiden UAS. One of the strengths of Leiden UAS is that even though there are many students on campus, there is always time for that moment of contact between the student and the lecturer. The building houses five different faculties each with their own unique atmosphere. The campus is perfectly situated at walking distance from the beautiful city of Leiden, with its train station giving you easy access to the Netherlands.



You can find us here:

Zernikedreef 11, 2333 CK Leiden

<https://maps.app.goo.gl/rReY2Rzcc7JmL2RLA>

The building at Zernikedreef 11 can be quite a maze, make sure you keep the [map of the buildings](#) (in Dutch) handy.

LUAS exchange website

Much of the information in this guide can also be found online on our website.

The address is www.hsleiden.nl/en/exchange

You can also scan the following QR to go there:



Opening hours Leiden UAS

On weekdays our university building is in general open from 07.30 until 21.30, on Fridays until 18.30. During weekends, public holidays and the week between Christmas and New Year the university building is closed.

Servicedesk

The Servicedesk is the first point of contact for students at Leiden UAS. Here, you can get assistance with all your queries about booking a (class)room, WiFi, technical difficulties, facilities, and ICT issues, borrowing equipment, etc. You can also chat with them on weekdays from 09:00 to 16:30 via hsleiden.nl and mijn.hsleiden.nl.

Location: F0 corridor in the main building (Zernikedreef 11), after entering via the main entrance, go immediately to the right.

Email: servicedesk@hsleiden.nl

Phone: +31(0)71 5188 900

WhatsApp: +31(0)6 48 13 36 22

Restaurants and cafés

Students, staff and visitors can visit the Restaurant (B0), Grand Café (B0) and Fresco (E0) of Leiden UAS for coffee/tea, lunch, various refreshments and dinner.

The Restaurant is located on the first floor of the main building, near the entrance, and offers a wide variety of food and drinks daily. Payment can be made by contactless payment.

The Grand Café is located in the B0 corridor of the main building. Here, you can enjoy a cup of coffee and a sandwich during the day, and from 4 p.m. onwards, it's the perfect spot for drinks.

Restaurant Fresco, located on the first floor of Building E (E0), provides a daily selection of vegetarian options for breakfast, lunch, and dinner. Payments can be made through contactless payment.

Media Centre (more than a library)

The Media Centre houses over 30,000 books, DVDs, teaching materials, journals, theses, games, and provides printing and copying facilities. It maintains a Media Centre page with 24/7 access to digital resources from 38 databases, reference software (RefWorks), and information on copyright and citing sources (APA). The centre also serves as a library offering a quiet work environment with diverse student workstations. Additionally, the Media Centre provides support in searching for information for your studies.

Location: A2.010 in the main building (Zernikedreef 11)

Email: mediacentrum@hsleiden.nl

Phone: +31(0)71 51 88 773 / 780

International Office

The International Office of Leiden UAS consists of Lieke Steijger and Thomas Lodder. If you have any questions or concerns, you can always contact us directly at International.office@hsleiden.nl.



Once you are here, you can also swing by our walk-in office hours on Tuesday and Thursday from 11 to 13 at the Servicedesk (F0.034).

Bookshop Leiden UAS

In the central hall of our university you can find a bookshop (room F0.006). There you can buy study books and order study packages. There's also regular literary books and picture postcards. You can find an overview of the opening hours on the door of the bookshop.

Need extra help?

Problems adjusting to the Dutch culture? Do you miss your family and friends? Having a hard time studying in a foreign language? Overwhelmed by your new environment? First, always discuss these with the coordinator of your course. You can also contact Student Support, which employs student deans, psychologists, counsellors, budget coaches, and language coaches. All discussions are confidential.

Location: Daily consultation hour from 13:00-15:00 in F0.057 in the main building (Zernikedreef 11)

Email: studentsupport@hsleiden.nl

Phone: From 13:00-15:00 to 071-5188821

Leiden University of Applied Sciences is dedicated to providing a safe working and learning environment. However, if you ever find yourself in an uncomfortable situation, the confidential advisors at our university are here to help.

You can contact a confidential advisor to discuss undesirable behavior, whether it occurs between employees, among students, or between employees and students, in both face-to-face and online settings.

Email: vertrouwenspersonen.bb@hsleiden.nl

Grading system

The Dutch grading system has remained unchanged for several decades: the scale ranges from 1 (very poor) to 10 (excellent). The lowest passing grade is 5.5. 9s are seldom given and 10s are extremely rare. Grades 1, 2 and 3 are hardly ever used.

10	pass with distinction
9	pass with merit
8	very good pass
7	good pass
6	pass
5	near pass
4	fail
3	bad fail
2	poor
1	very poor

See also: [Grading systems - the Netherlands | Nuffic](#)

Academic Calendar & Holidays

It is emphasised that when planning their holidays students must stick to the official holiday periods. It is sometimes necessary for Leiden UAS to change dates and schedule exams or lectures on dates originally planned as lecture-free or exam-free days. Students can be assured that no changes will be made to the official holiday periods.

Autumn holidays	Monday 28 October 2024 - Friday 1 November 2024
Christmas holidays	Monday 23 December 2024 - Friday 3 January 2025
Spring holidays	Monday 24 February 2025 - Friday 28 February 2025
Easter holidays	Friday 20 April 2025 - Monday 22 April 2025
King's Day	Saturday 26 April 2025
May holidays	Monday 28 April 2025 - Friday 9 May 2025
Ascension holidays	Thursday 29 May 2024 - Friday 30 May 2025
Whitsun holidays	Sunday 8 June 2025 - Monday 9 June 2025
Summer holidays	Monday 21 July 2025 - Friday 29 August 2025

5. Courses offered

Here you will find the courses offered to incoming exchange students in greater detail.

Course	EC	Fall semester	Spring semester	Faculty
International Business 1 & 2	30	X	X	Management & Business
The International Professional in the Public Sector	30	X		Management & Business
Applied Molecular Biology	15		X (T3)	Science & Technology
+ Genomics	15		X (T4)	Science & Technology
Metabolomics	15		X (T3)	Science & Technology
+ Food Health Innovation	15		X (T4)	Science & Technology

All courses require a laptop from the student. In case you have questions about the content of a specific course, entry requirements, learning outcomes, language skills, exams, resits, attendance, rules and regulations or other questions related to the course, you can send an email to the lecturer of the course.

All these courses last one semester and carry a study load of 15 or 30 EC. This is based on the [European Credit Transfer and Accumulation System \(ECTS\) - European Education Area \(europa.eu\)](https://www.europa.eu/education/credit-transfer-and-accumulation-system-ects).

International Business 1 & 2

Course code:	30101MIINTE1-25 & 30101MIINTE2-25
Offered:	Semester 1 or 2
Credits:	30 ECTS
Learning outcomes:	Applying marketing principles at an international level; Using insight into cultural differences between countries and insight into international labor relations
Method:	Work groups; Assignments; E-learning; Blended learning; Lectures; Practical education.
Contact person:	Jean-Pierre Schreurs; schreurs.j@hsleiden.nl +31 (6) 48133735
Entry requirements:	None
Assessment:	Term 1 Global Marketing: IBM group report & presentation Group report: video + class cases, 30% Group grade: project (cases), 70% Global marketing individual exam 100% Human Resource Management * Writing assignment (50%) / individual exam 50% Cultural Studies * Writing assignment / active participation Sustainable Value Chain * Assignment

* The subject Global Marketing (7 credits) is obligatory for all students. The subjects IHRM (4 credits), Cultural studies (4 credits) and the International Value Chain (4 credits) are voluntary subjects. Students are to choose a total of 15 credits.

Term 2

Global Marketing 2: IBM group report & presentation
Group report: video + class cases, 30%
Group grade: project (cases), 70%
Global marketing individual exam 100%
Human Resource Management 2 *
Writing assignment (50%) / individual exam, 50%

English Business Writing *

Writing assignment

Sustainable Value Chain 2 *

Assignment

* The subject Global Marketing 2 (7 credits) is obligatory for all students. The subjects IHRM 2 (4 credits), English Business Writing (4 credits) and the International Value Chain 2 (4 credits) are voluntary subjects. Students are to choose a total of 15 credits.

Literature:

Hollensen, Svend, Global Marketing: A decision-oriented approach, 8th Edition, Pearson Education, ISBN: 9781292251806.
International human resource management, Briscoe, Schuler and Tarique, 4th edition, 2012, Routledge.
Browaeyns, Marie-Joelle and Price, Roger (2019) Understanding Cross-Cultural Management, 4th edition. Harlow: Pearson Education Limited, ISBN: 9781292204970.

General Information

This course focuses on the international aspects of business and collaborating with students from a different cultural background, being challenged in high-level projects, speakers from the field, participating in an international week... does this appeal to you?

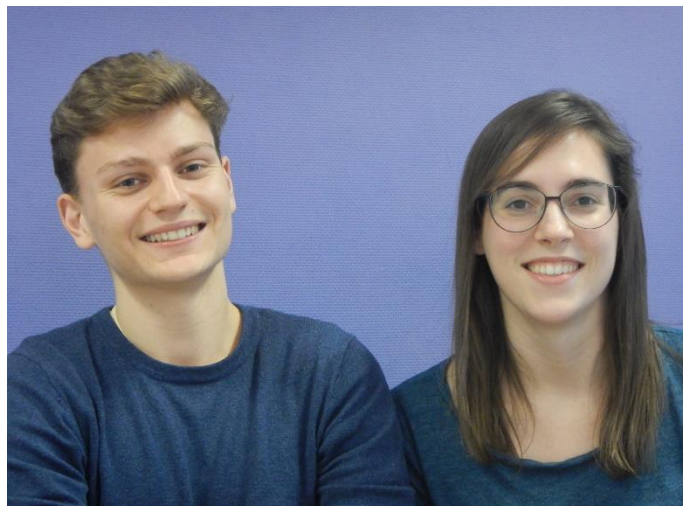
Immerse yourself in other cultures and discover what it means to do business internationally. International marketing plays an important role, as does deepening your English language skills. The theory is applied in international case studies that you develop together with your project group. Furthermore, attention is paid to international human resources management, international cultural studies and the international value chain. Lectures are supplemented with company visits and guest speakers.

The course starts with a welcoming day. In this day, students get to know one another and an introduction to the material is given. International Business offers the opportunity to participate in an international week that takes place during the second term. This international week is set up by students and lecturers. Past examples include a study week to Portugal (Lisbon), Ireland (Dublin), Scotland (Edinburgh), Turkey (Istanbul), Poland (Krakow and Warsaw) and Germany (Sigmaringen).

Where the first term of the course International Business focuses on strategical aspects of doing business internationally, the second term of the course focuses on the operational aspects. The course International Business offers an in-depth look at existing literature on marketing, HRM, the value chain and cultural aspects of business.

Max Schaber (20, international Erasmus student from Berlin) "The cultural diversity in international business I formed an amazing group of friends. All students are peers, helping one another. The mix of culture and business made it a unique minor."

Hélène Raymaekers (22, international Erasmus student from Leuven) "A Dutch experience, there is not much hierarchy between lecturers and students which is surprisingly pleasant. Working on a real life project for a major European player was challenging. International business II is a good preparation for my internship which follows."



The International Professional in the Public Sector

Course code:	30301MIIP30-25
Offered:	Semester 1
Credits:	30 ECTS
Hours per week:	Students are expected to be available 40 hours a week
Learning outcomes:	You can make a connection between the different modules; You're able to analyze, and resolve problems from the perspective of cultural differences and similarities, which include being tolerant, respectful, curious and empathetic towards others; You're able to apply the theory learned to analyze a recent international conflict; You're able to communicate orally in English according to satisfaction (C1 Cambridge Advanced) You're able to further expand and deepen your knowledge of the conflict from Part I by adding the perspectives of Human Rights and Sociology; You're able to identify the relevant stakeholders and their roles; You're able to communicate in written English according to satisfaction (C1 Cambridge Advanced) or you've developed into a proficient C2 'near native speaker' in English
Method:	Work groups; Assignments; E-learning; Blended learning; Lectures; Off-campus trips
Contact person:	Marcel van der Stroom; stroom.vd.m@hsleiden.nl
Entry requirements:	None
Assessment:	Part I International Public Law (written) – 20% International Relations (written) – 20% English I writing (written) – 13,34% English I reading (written) – 20% Intercultural Sensitivity (assignment) – 13,34% Project 1 (portfolio) – 13,34% Part II Sociology (written) – 20% Human Rights (assignment) – 20% English II (written) – 20% Working in Complexity (assignment) – 20% Project II (portfolio) – 20%
Literature:	TBD

General Information

This minor is for anyone interested in international affairs. Through a focus on the international public sector, you will learn about the various aspects of international conflicts and the international legal system that tries to end and prevent conflicts in the world.

Students of all specializations may enroll for this minor. The classes are taught in English, so proof of higher than average command of English is therefore necessary. Furthermore, students have an opportunity to build on these skills, as the minor will elevate your English to Cambridge Advanced or Professional level.

Part I

In part 1 of this minor, the student will focus on the international legal system within the context of international relations and intercultural sensitivity. Part I ends with a project in which these elements, as well as the English language requirements for the Cambridge CAE level, are tested.

Part II

Students who choose to continue with the second part of the minor, will dive deeper into these themes by studying human rights and sociology, as well as follow classes on working in complex situations and English at the CPE level. Part II of the minor ends with a project in which all aspects of Parts I and II are used.

Students who finish these parts successfully will also be awarded the certificate C1 Cambridge Advanced English (or C2 Cambridge 'Near Native Speaker').

Applied Molecular Biology

Course code: MIN-BM-AMB-25

Offered: Semester 2 – Term 3

Credits: 15 EC

Learning outcomes: The student is able to use CRISPR-Cas9 technology in cells and can explain its theoretical and practical considerations to fellow scientists;
The student learns to think commercially in the field of life sciences and what is involved in starting a business or making a business case;
The student will acquire a business mind-set and can pitch the startup or the business case;
The student can analyse proteomics data and can isolate and characterise a protein and present the results of the protein isolation and characterization in a report

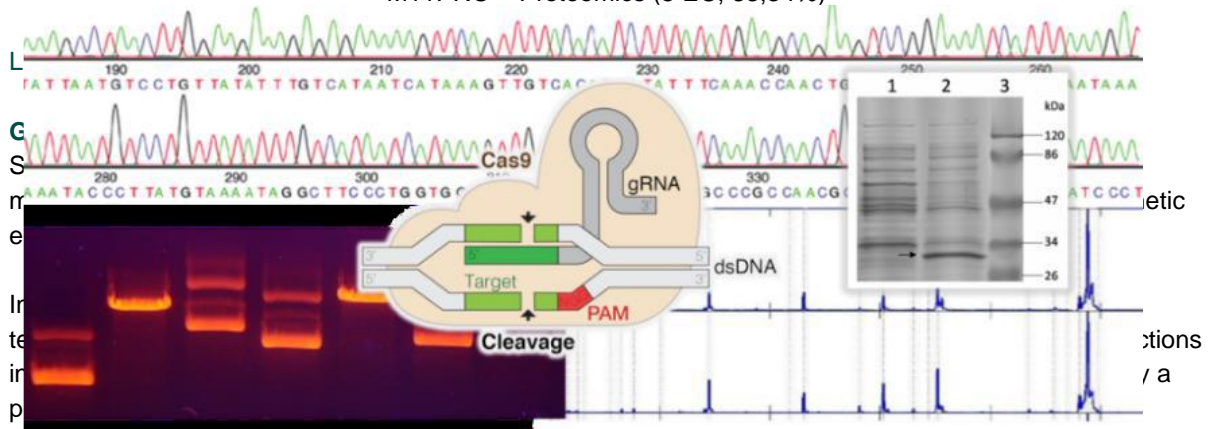
Method: Assignments, presentation, report, keeping a lab journal

Contact person: Wouter van Zon; zon.van.w@hsleiden.nl

Entry requirements: **Only in combination with Genomics.** A good background in molecular biology is desired.

Assessment: M11RBT – Recombinant Biotechnology (5 EC, 33,34%)

M11PRO – Proteomics (5 EC, 33,34%)



Finally, you will learn how to set up your own company in bio sciences and you will be guided by experts from within the Bio Science Park Leiden. Writing a business case may be part of the module as well.

A module focused on sustainable innovation following lean startup and design thinking methods.

Genomics

Course code: MIN-IN-GENO-25

Offered: Semester 2 – Term 4

Credits: 15

Learning outcomes: Prepare and sequence samples for NGS laboratory;
Explain and apply the operation of common sequence analyses;
Use command line linux and operate applications;
Describe current standard NGS methods and their applications;

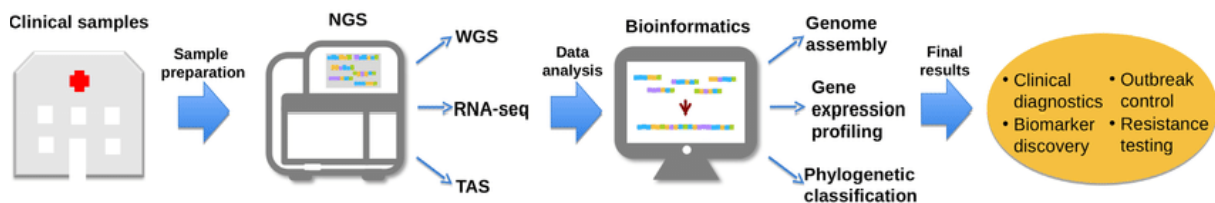
Method:	Analyze NGS data
Contact person:	Assignments, Blended learning, practicals, lectures Wouter van Zon; zon.van.w@hsleiden.nl
Entry requirements:	Only in combination with Applied Molecular Biology. The programme is at undergraduate level, but you will need at least two years of training in a biomedical or a biological study to be able to follow the tuition. Bachelor (BSc) and Master (MSc) students in such fields are welcome to apply. Furthermore, basic knowledge of molecular biology and the English language is required.
Assessment:	BMIN – Laboratory skills MinION (3 EC, 20%) assignment BLIN – Linux and sequencing (2 EC, 13,34%) computer assignment BTS – Sequence analysis theory (4 EC, 26,67%) Written test (18,67%) and assignment (8%) BNGSAP – Next Generation Sequencing Analysis (6 EC, 40%) Written exam (28%) and assignment (12%)
Literature:	Recommended, not mandatory: J Pevsner (2015). Bioinformatics and Functional Genomics, 3rd edition.

General Information

Genome biology has become central to many areas of molecular biology research. Applications are found in the fields of medicine, plant breeding, pharmaceuticals, forensics, food industry and production, ecosystem monitoring, and virology. This success is driven by continuing development to DNA sequencing technologies in the lab and of analysis tools for the vast amounts of data produced.

You will learn to apply a complete DNA analysis workflow from start to finish. To start, you will sequence DNA from a biological sample using Nanopore technology. You will learn about this platform and many others. You will learn to evaluate quality and quantity of the data produced and why it matters. Then, you will perform the analysis that will give meaning to your data. You will learn the power of the Unix command line language and the organisation of a computer server. Most importantly, you will experience fun in coding and develop computational thinking.

With such skills, you can start to think about using virtually any software tool you want, on any type of data.



Metabolomics

Course code:	MIN-CH-META-25
Offered:	Semester 2 – Term 3
Credits:	15
Learning outcomes:	Understand and recognise the relevance of metabolomics research for society; Know and understand the basic concepts and workflow of metabolomics; Understand and apply (some of the) most important technologies that are used in metabolomics; Know how to generate and report metabolomics data; Know how to carry out metabolomics research
Method:	Group work, assignments, E-learning, Blended learning, lectures, practicals

Contact person:	Wouter van Zon; zon.van.w@hsleiden.nl
Entry requirements:	Only in combination with Food, Health and Innovation. This course is open to students in the third year or higher of the bachelor phase of a chemistry or related study. A good background in (bio)chemistry is desired.
Assessment:	M11IMR – Introduction to Metabolomics Research (5 EC, 33,34%) M11MAT – Metabolomics Analytical Technology (5 EC, 33,34%) M11MDA – Metabolomics Data Analysis (5 EC, 33,34%)
Literature:	N/A

General Information

The course is set up according to the 'metabolomics workflow' and consists of three modules (see assessment).

Metabolomics is an exciting new research field which makes use of the (un-)targeted measurement of the enormous chemical diversity in biological samples and big data techniques to enforce new breakthroughs in biology and personalized medicine. All steps in the metabolomics workflow, i.e. from the formulation of a biological question to the biological interpretation, will be covered but focus will be strongly on analytical chemistry techniques (i.e. sample preparation, LC-MS, GC-MS, CE-MS and NMR) and big data analysis (i.e. multi-variate data analysis such as PCA). The course consists of both theoretical courses and practical workshops. Experts from the field of metabolomics will contribute to the course, i.e. by giving lectures.

The mission of the course is to deliver enthusiastic, skilled students who have metabolomics as their specialty and who are ready to take on a metabolomics oriented job or master track. The course aims:

1. to offer the students a modern, up-to-date course on Metabolomics in which they will be taught all important aspects of metabolomics;
2. to make students enthusiastic about metabolomics so that they recognize the value of this approach for personalized medicine and become motivated to contribute

After successfully completing this course, students are ready to join a metabolomics laboratory as specialized technician who will be able to contribute to metabolism research.

Food Health Innovation

Course code:	MIN-BM-FHI-25
Offered:	Semester 2 – Term 4
Credits:	15
Learning outcomes:	Students know and understand the scientific foundations (theories, methods, techniques) of food science and can understand scientific publications in this field; Students can apply analytical techniques in food science to answer research questions in this field; Students can document and present results and translate scientific findings to a broad public
Method:	Group work, assignments, E-learning, blended learning, lectures, practicals
Contact person:	Wouter van Zon; zon.van.w@hsleiden.nl
Entry requirements:	Only in combination with Metabolomics. A basic knowledge in the natural sciences is required; 3rd- of 4th-year University students and 3rd- of 4th-year students from University of Applied Sciences from studies biology, chemistry and bioinformatics are welcome to register.
Assessment:	M11HCP – History of cooking and plant breeding (1 EC 6,67%) M11PPT – Physiology and psychology of taste and health (3 EC, 20%) M11FCA – Food chemistry and analysis (4 EC, 26,67%)

M11FFS – Fermentation and food safety (4 EC, 26,67%)

M11MOT – Modernist cooking techniques (3 EC, 20%)

Literature:

Relevant and recent scientific literature, to be announced later

General Information

Foodlab Leiden is a multi-disciplinary research and educational lab that combines the scientific fields of (micro)biology, chemistry, (bio)informatics and physics to study food and understand the potential impacts that food has upon our day-to-day existence.

Although most people regularly cook, they generally do not consider the science behind it. What is actually the purpose of cooking your food? Why do eggs solidify when heated? Why do fruits turn brown when you slice them? To understand what happens when we cook food, you need to be familiar with the underlying biological, chemical and physical principles.

During this multidisciplinary course we apply theories from biology, chemistry, microbiology and physical sciences to study food and understand the potential impacts that food has upon our day-to-day existence. You will get acquainted with the composition and properties of food, the processes involved in preparation of food and the relationship between food, taste and health. Moreover, you will apply the obtained knowledge to conduct your own food experiments.

